

A detailed section of Michelangelo's famous fresco 'The Creation of Adam' from the Sistine Chapel. The central figure is Adam, lying on his back with his right arm extended towards the center. He has a long, flowing white beard and is wearing a white drape. To his right, the face of God is visible, looking towards Adam. The background shows other figures in the scene, including the Virgin Mary and other angels, though they are less distinct. The overall color palette is dominated by earthy tones like reds, browns, and greys, with highlights of white and blue.

# THE BACHELOR OF CONTEMPORARY MINISTRY

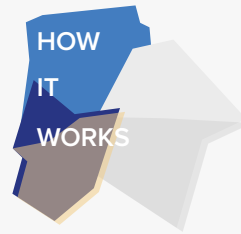


ALPHACRUCIS COLLEGE  
ACNZ.AC.NZ

To enquire, email:  
[communicate@acnz.ac.nz](mailto:communicate@acnz.ac.nz)

**SCHOLARSHIP  
AVAILABLE**

# CONNECT COMMUNICATE INFLUENCE



## Bachelor of Contemporary Ministry

The BCMin is made up of a total of 24 papers (15 credits each, for a total of 360 credits). Every programme for this award shall include:

- Christian Studies Major (8 papers, compulsory) AND
- Pastoral Ministry Major (8 papers) OR 2 x Minors (4 papers each, Pastoral Ministry, Leadership, Biblical Studies, Theology)
- Elective papers (8 papers)

### Christian Studies Major (Compulsory)

The Christian Studies Major forms the core of the BCMin award. It is aimed at developing in students a solid understanding of the Christian faith (biblically, historically & theologically), with well-informed ethical principles and founded on disciplines of Christian spirituality. It consists of the following papers:

- Narrative of the First Testament (BIB101)
- Writings of the New Testament (BIB102)
- Understanding the Faith (THE101)
- Biblical Hermeneutics (BBI201)
- Personal and Public Ethics (THE205)
- Christian Spirituality and Vocation (SPI201)
- 1 x Theology Paper (300 level)
- 1 x Biblical or Theology Paper (300 level)

### Pastoral Ministry Major

The traditional core of Christian ministry education has been to train professional ministers and pastors. The BCMin continues this core focus in serving churches by providing equipped ministers. The Pastoral Ministry Major specialises in providing students with a systematic and coherent approach to pastoral formation and practice. The specialization will include outlining approaches to the theory of pastoral ministry, as well as opportunities for developing pastoral ministry skills and workplace experience.

### Biblical Studies Minor

The Biblical Studies Minor provides students the opportunity to delve deeper within the biblical text, improving their exegetical skills and understanding.

### Theology Minor

The Theology Minor provides students the opportunity to delve deeper into theological understandings of Christian doctrines,

foundations of faith, spirituality and their context.

### Leadership Minor

The Leadership Minor aims to provide students with an understanding of the theory of leadership, as well as how to develop leadership and management skills, with opportunities for leadership growth and workplace experience.

### Pastoral Ministry Minor

The Pastoral Ministry Minor specialises in providing students with the theories for pastoral formation and practice. Opportunities for developing pastoral ministry skills and workplace experience are also included.

### Accreditation

Alphacrucis College is accredited by the New Zealand Qualifications Authority under the provisions of the Education Act 1989 to provide education and training.

### How to Enrol

You will find all the information on how to enrol and can download Enrolment Forms from our website: [acnz.ac.nz](http://acnz.ac.nz)

### Contact us

Alphacrucis College  
60 Rockfield Road  
One Tree Hill, 1061, Auckland PO Box 12747,  
Penrose 1642, Auckland

E: [info@acnz.ac.nz](mailto:info@acnz.ac.nz)  
P: +64 (9) 580 1500  
F: +64 (9) 579 5150

**Disclaimer:** the information contained in this document was correct at the time of publication. The college reserves the right to make subsequent changes at any time. For up-to-date information please refer to [acnz.ac.nz](http://acnz.ac.nz).

**Mode of Delivery:** Face To Face

**Location:** 60 Rockfield Road, Penrose, Auckland

**Accreditation:** NZQA

To enquire, email:

[communicate@acnz.ac.nz](mailto:communicate@acnz.ac.nz)



[alphacrucisnewzealand](https://www.facebook.com/alphacrucisnewzealand)



[@alphacrucisnz](https://twitter.com/alphacrucisnz)